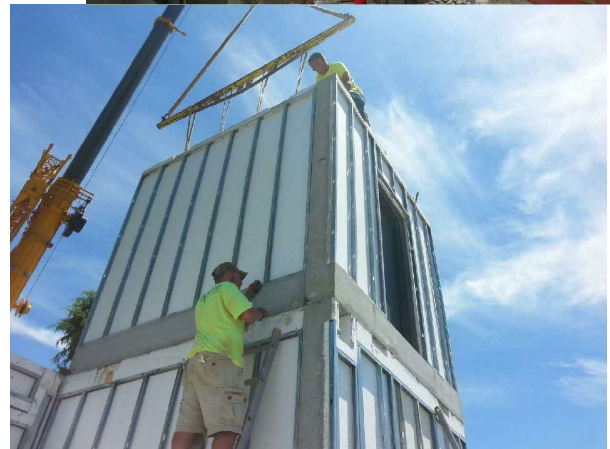


# VANHOUSECO & V<sup>®</sup> Precast

ENVIR  CAST<sup>™</sup>  
Residential, Commercial, & Industrial Walls



EnviroCast<sup>™</sup> Commercial Walls

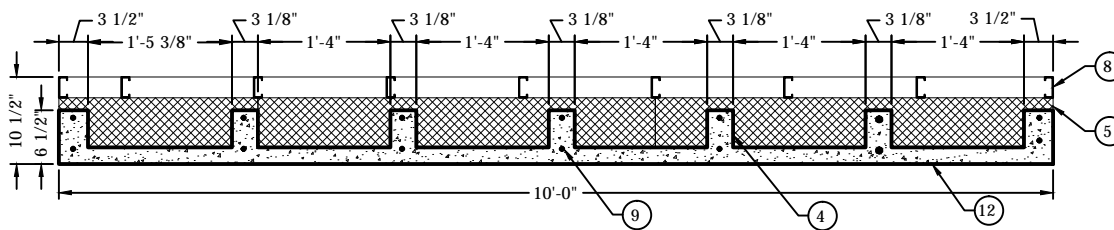
Built off of the foundation of the EnviroCast basement walls, the Commercial Walls offer the versatility of pre-insulated walls with the strength, durability, & versatility of concrete. Picking up where the Residential walls leave off, the Commercial walls offer walls for taller & more heavily loaded applications.

These walls are offered in a variety of sizes and configurations to meet your project specific requirements. These walls can be adapted to a variety of light commercial applications such as storage, office building, warehouses, etc. Rather than being a fixed product limited by design, the EnviroCast Commercial Walls are dynamic and can take on many shapes, forms, & functions.

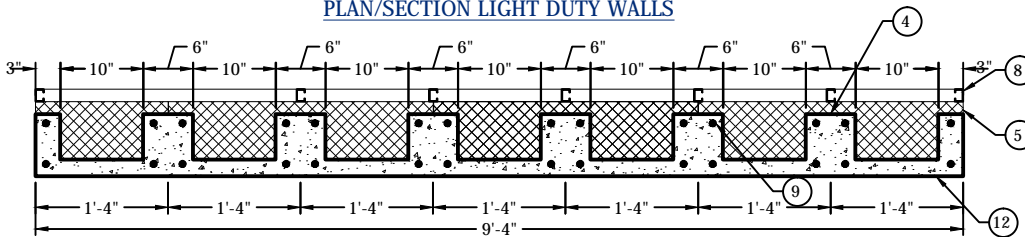
A variety of connection types can be employed to suit your needs. Bolted, post-installed, or embedded steel items may be provided & used for base connections, shear anchors between panel sections & segments, & roof diaphragm & support connections. These walls can be used as primary structural members or cladding elements for steel or concrete frame structures.

The wall structural system consists of reinforced vertical & horizontal integral concrete studs & "bond beams" that provide vertical & horizontal flexural & shear capacity to meet all National, State, & local Building Codes. Wire mesh reinforcing may be added to enhance in-plane shear capacity.

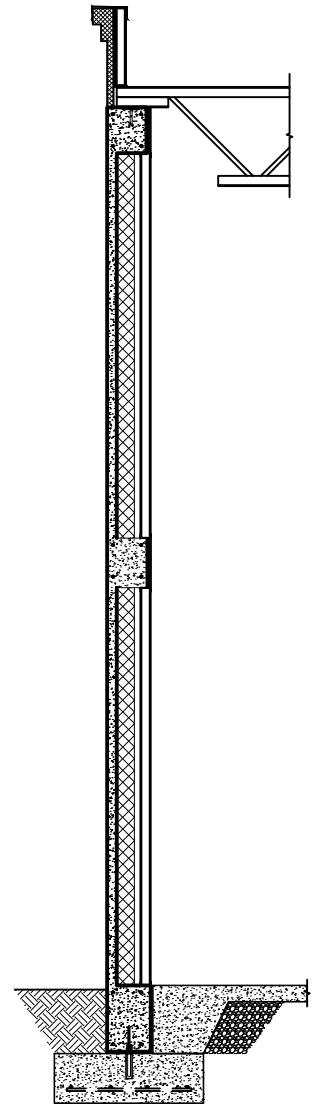
The illustrations below show a couple of possible variations of the walls, but by no means an exhaustive reference.



PLAN/SECTION LIGHT DUTY WALLS

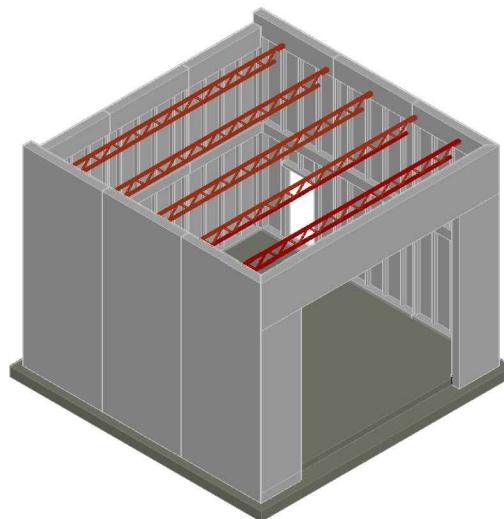


PLAN/SECTION MEDIUM TO HEAVY DUTY WALLS



WALL SECTION

LEGEND	
①	TOP LIFTING INSERTS
②	STEEL PLATE FOR BAR JOISTS
③	EDGE LIFTING INSERTS
④	CONCRETE STUD
⑤	EPS INSULATION
⑥	XPS INSULATION
⑦	DOWEL INSERTS
⑧	2 1/2", 18 GA. METAL STUDS
⑨	(2) RE-BARS EA. STUD (1 EA. FACE)
⑩	(4) RE-BARS @ BASE & BOND BEAM
⑪	OPTIONAL STAMPED PATTERNS
⑫	2 1/4" CONCRETE FACE



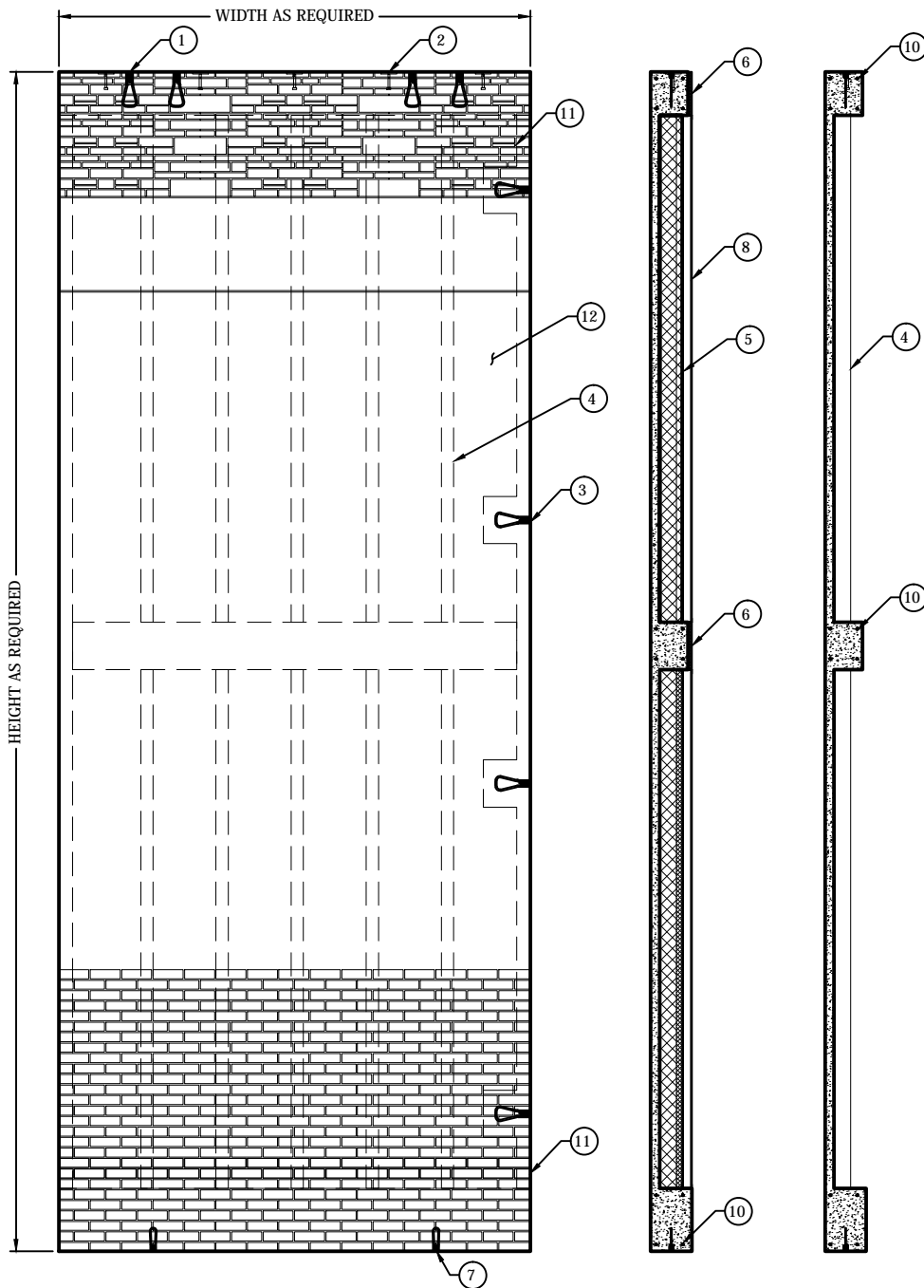
STRUCTURE ISOMETRIC

# ENVIROCAST™

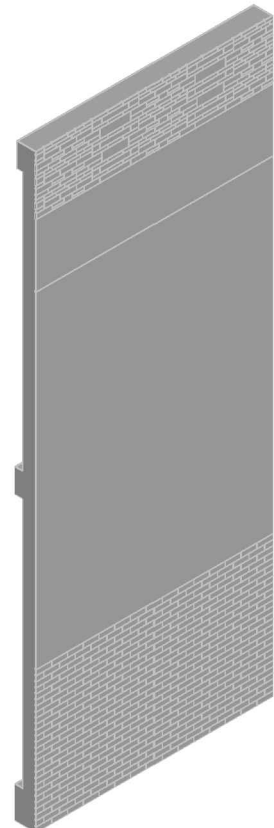
Residential, Commercial, & Industrial Walls

The sections below illustrate the generic wall construction for the wall panels. There are many different options that can be used for your unique applications including various finishes, patterns, connection arrangements, and wall profiles.

While these are shown as "typical" designs, other custom designs are possible due to the versatility of the EnviroCast Commercial Wall System. Contact our Technical Support Staff for any custom requirements for your project.



LEGEND	
①	TOP LIFTING INSERTS
②	STEEL PLATE FOR BAR JOISTS
③	EDGE LIFTING INSERTS
④	CONCRETE STUD
⑤	EPS INSULATION
⑥	XPS INSULATION
⑦	DOWEL INSERTS
⑧	2 1/2", 18 GA. METAL STUDS
⑨	(2) RE-BARS EA. STUD (1 EA. FACE)
⑩	(4) RE-BARS @ BASE & BOND BEAM
⑪	OPTIONAL STAMPED PATTERNS
⑫	2 1/4" CONCRETE FACE



ELEVATION (FACE VIEW)

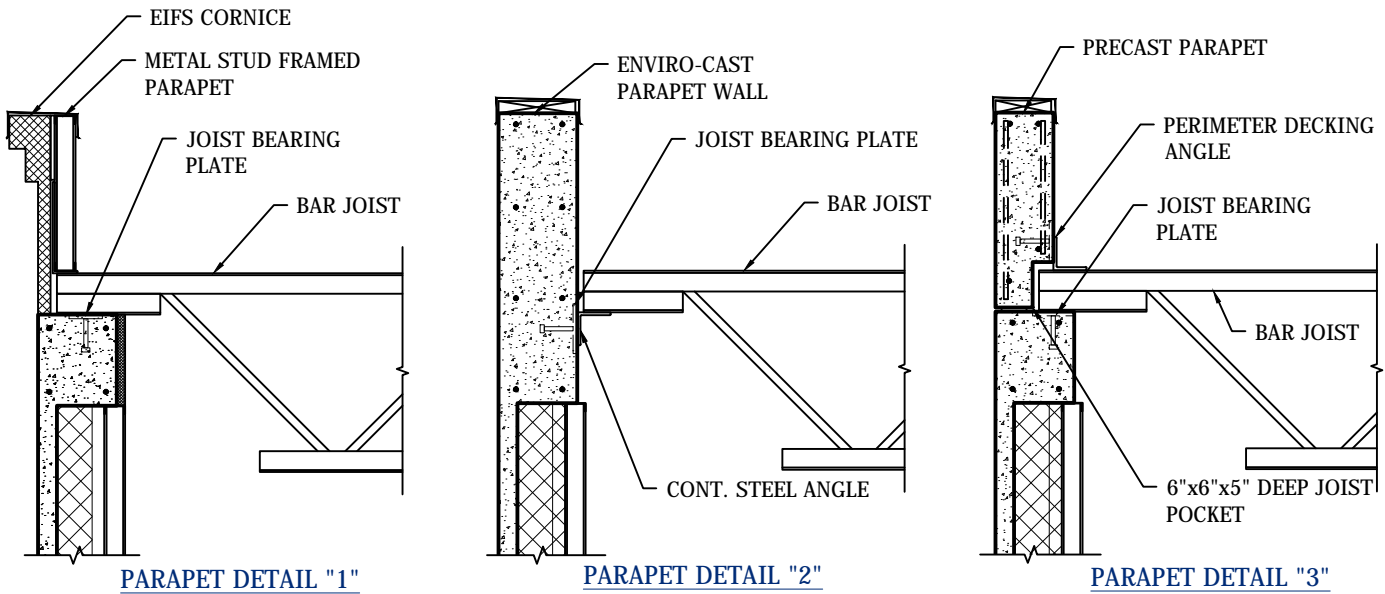
COMPOSITE SECTION CONCRETE SECTION

ISOMETRIC

The EnviroCast Commercial Wall is also available in a variety of finishes. From smooth to broom to brick stamp & more, the EnviroCast Commercial Wall is also a versatile component of the building facade.

The EnviroCast Commercial Wall also provides for an excellent insulated building envelope without adding expensive or time consuming insulation to the wall, since the insulation is already built in. Though variable depending on structural requirements, the EnviroCast Commercial wall can range up to a composite R-value of 23 for some applications. As you can see above the EnviroCast Commercial Wall can meet (depending on configuration) or exceed the 2012 Energy Codes that many Municipalities are now requiring.

From flexibility of design to energy efficiency to durability, the EnviroCast Commercial Wall System provides you with what you need to meet today's demanding Building Code requirements, Energy efficiency, & speed of construction.



A FEW PARAPET FRAMING OPTIONS

In addition to the Commercial Walls, various other elements may be incorporated into the structure including headers, beams, columns, elevator tower walls, etc. to complete the building structure. In short, the EnviroCast Commercial Wall System is not limited by the system's constraints, but only by your imagination.

As illustrated above & on the previous pages, the EnviroCast Commercial Wall is a very versatile component of the building structure & facade, & The EnviroCast Technical team is ready to review your design to help you incorporate the EnviroCast Commercial Wall System into your next project.

**VANHOSECO PRECAST**

244 BLAIR BEND DRIVE

LOUDON, TN 37774

Tel: (865) 458-3998

Web: [www.VANHOSECO.com](http://www.VANHOSECO.com)

